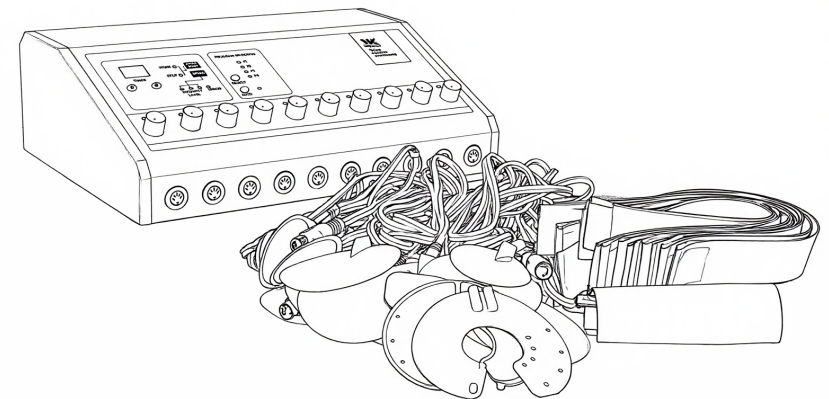


Instructions Manual

Beauty instrument

F905.N

ELECTRO-STIMULATION



WK
Imported by
WEELKO BARCELONA SL

Pol. Ind. La Vall d'an
Camí de Garreta, 92
08600 Berga
Barcelona - Spain
T. +34 93 824 90 20
E. info@weelko.com

VERSION 1.0

Product Packaging List

Name	Image Quantity
Main Unit	1
Large Electrode Pads	10
Small Electrode Pads	10
Electrode Connecting Wires	12
Breast Enhancement Electrode Pads	2
Small Patch Pads	2
Large Straps	1
Small Straps	10
Power Cord	1

Product Specifications

- Rated Voltage: AC 220V-240V
- Frequency: 50/60HZ
- Maximum Power Consumption: 12W
- Packaging Dimensions: 45x33x17CM
- Gross Weight: 5.7KG
- Net Weight: 4.8KG

Thank you sincerely for choosing our product. This manual is compiled to help users operate this instrument effectively. We hope our company's products and services will bring you a distinguished experience.

This user manual contains all general information about the instrument. It serves as the starting point for new users to begin using the instrument, as it provides a general introduction to the system, explains how it works, and details the instrument's installation and various operation methods.

Usage Precautions

1. Before turning on the machine, be sure to read the user manual carefully. Operators must be familiar with the user manual and operation methods, and the instrument must be managed by a designated person;
2. Do not use a power strip to avoid fire hazards;
3. When replacing the fuse, always turn off the power switch to prevent fire and electric shock;
4. Must use a power supply of 220V±22V, 50HZ±1HZ and an effectively grounded socket;
5. Using a damaged or modified power cord may cause fire and electric shock hazards;
6. If the instrument is loose, falling, or damaged, please contact the company in a timely manner;
7. Do not use the instrument in unstable environments such as tilting, vibrating, or impacting conditions;
8. No water or debris is allowed to enter the interior of the instrument. In case of foreign objects entering, please contact the company promptly;
9. When moving the instrument, the power plug must be pulled out first;
10. When moving the instrument, try to avoid vibration;
11. The instrument should be placed on a stable surface, with at least 5cm of space left around it to ensure air circulation and facilitate heat dissipation of the instrument;
12. Do not cover the instrument with anything to prevent blockage of the air vents;
13. Avoid using the instrument in the following environments: direct sunlight; high humidity environments; near water; vibrating or tilting places; strong magnetic field environments; places where electromagnetic waves or impulse voltages occur; places where chemicals are stored or corrosive gases exist;

14. This instrument shall not be placed or used near radios, televisions, copiers, fax machines, etc.;
15. Do not use it together with other instruments (such as microwaves) to avoid mutual interference between instruments and cause misoperation;
16. If an abnormal situation occurs to the instrument or the user during operation, the operator shall immediately turn down the intensity to the lowest level, press the stop switch, and stop using the instrument;
17. The instrument shall be correctly used by skilled operators. Personnel other than operators are not allowed to use the instrument;
18. After the operation, place the control handle back on the control handle holder (if applicable);
19. After using the electrode pads and connecting wires, clean them properly for next use.

▪ **Precautions for Troubleshooting, Storage, and Inspection**

- Do not use the instrument if it malfunctions. In case of smoke, burning smell, or inability to operate, continued use may cause fire or electric shock. Immediately press the stop button, turn off the power, unplug the power plug, and contact the company or distributor immediately;
- Personnel other than professional technicians are strictly prohibited from repairing or modifying the instrument. The interior of the instrument must never be opened;
- The instrument and its components (especially electrode pads and wires) must be inspected regularly;
- Do not use cleaning tools that may damage the instrument's protective coating, such as brushes, brooms, etc.;
- If the instrument is not used for more than 2 weeks, it must be carefully inspected before reuse.

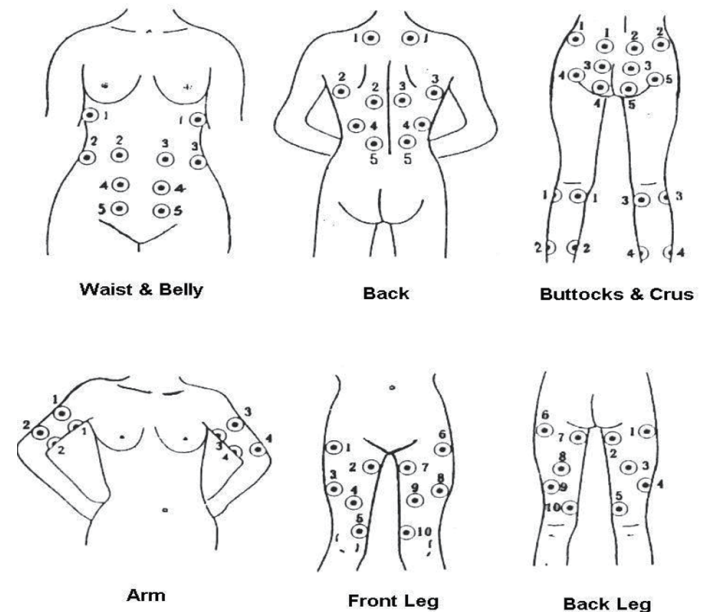
▪ **Contraindicated Groups**

▪ **(Do Not Use If You Belong to the Following Groups)**

- Pregnant women and lactating women;
- Patients with severe heart disease, hypertension, or epilepsy;
- Individuals with severe skin inflammation, eczema, dermatitis, sunburn, or unhealed wounds;

Troubleshooting

Malfunction Phenomenon	Handling Method
No current output from electrode pads	Check if the pads are properly connected to the output sockets; ensure the pads are tightly attached to the skin; replace aged or damaged electrode pads
Uncontrollable current intensity	Stop using immediately and contact the manufacturer or distributor for repair or replacement
Alarm sound during startup	Ensure all intensity knobs are set to the lowest level; check if the voltage selection switch is in the correct position



Parameter Specifications

Program	Current (mA)	Frequency Range (HZ)
P 1	0.01-3	0.5-4
P 2	0.015-10	0.8-5
P 3	0.03-10	1-7
P 4	0.05-11	1.2-8

Instrument Operation Steps

1. Voltage Selection: Check and set the 110V/220V voltage conversion switch (220V for China) to the correct position;
2. Power On: Plug in the power cord, then turn on the power switch (41) on the rear panel. The time display will show the default 30 minutes;
3. Electrode Connection: Insert the electrode pads into the pulse output sockets (29-38), then attach the pads to the target area (ensure tight contact with the skin);
4. Mode and Time Setting:
 - Manual Mode: Press the Program Selection Button (12) to switch between P1-P4. Use the Timer Adjustment Buttons (10-11) to set the working time (maximum 60 minutes);
 - Auto Mode: Press the Auto Program Selection Button (17) to activate the auto mode, then set the time as needed;
5. Intensity Adjustment: Ensure all intensity knobs (19-28) are set to the lowest level before starting. Press the Start Button (01) to begin treatment, then slowly adjust the intensity knobs according to personal comfort;
6. During Treatment: Monitor the user's sensation. Stop immediately if any discomfort (such as severe pain or skin irritation) occurs;
7. End Treatment: When the time is up, the instrument will automatically stop. First turn all intensity knobs to the lowest level, turn off the power, and then remove the electrode pads;
8. Post-Operation: Clean and maintain the electrode pads as per the "Electrode Pad Usage and Maintenance" section.

- Those with implanted cardiac pacemakers, defibrillators, or other internal electronic devices;
- Individuals with a history of skin allergies or allergies to metals, silica gel, or the conductive gel of electrode pads;
- Patients with malignant tumors, severe cardiovascular and cerebrovascular diseases, or sensory disorders (insensitive to heat or pain);
- Individuals with recent surgeries or internal metal implants (such as steel plates, bone nails);
- Children and the elderly (must be used under adult supervision).

Working Principle and Operation Guide

Working Principle

The instrument uses electrical pulse stimulation to act on the skin and muscles, simulating massage, tapping, and acupuncture effects. It helps relieve muscle tension, promote local blood circulation, and assist in body shaping and slimming when used as directed.

Usage Process and Notes

1. Preparation and Connection

- Equipment Inspection: Check if the instrument, connecting wires, and electrode pads are intact and undamaged;
- Skin Preparation: Clean and dry the skin of the treatment area to remove oil and dirt;
- Electrode Placement: Connect the two electrode pads to the main unit via wires, then attach them to the treatment area (such as sore muscles or target slimming areas), ensuring they are tightly attached to the skin;
- Note: Keep a certain distance between the two electrode pads to avoid direct contact or short circuit.

2. Power On and Settings

- Parameter Setting: The instrument has preset modes (such as Massage, Tapping, Acupuncture Simulation). Always start from the lowest intensity and gradually increase according to personal comfort;
- Time Setting: Set the treatment time (common range: 10-30 minutes). The instrument will automatically stop at the end of the treatment.

3. Treatment and Completion

- Start Treatment: Confirm the settings and start the treatment. The ideal sensation is obvious tingling or muscle twitching without pain;
- End Treatment: After the time is up, first turn the intensity to the lowest level or zero, then turn off the power, and finally remove the electrode pads.

Safety Warnings and Taboos Absolutely Prohibited Uses

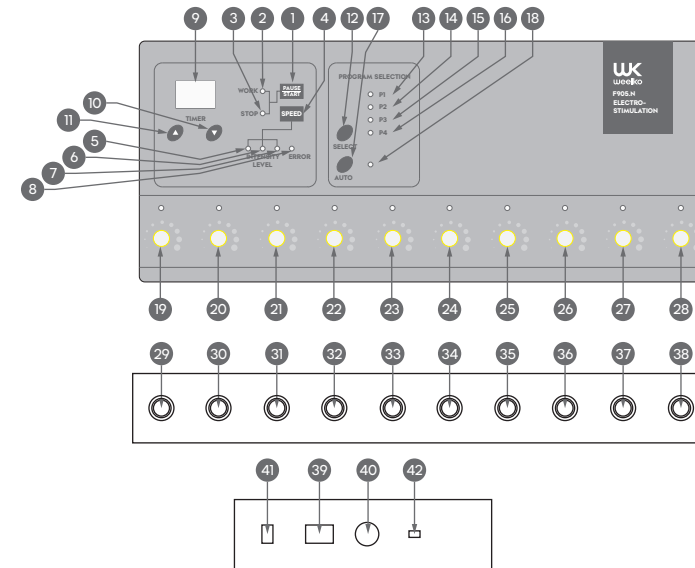
- Implanted Electronic Devices: Such as cardiac pacemakers, defibrillators;
- Specific Areas: Prohibited for use on the heart area, skull (temple), carotid sinus (both sides of the neck), throat, eyes, and genitals;
- Damaged Skin: Wounds, rashes, inflammation, or redness in the treatment area.

Use with Caution (Consult a Doctor Before Use)

- Pregnant Women: Safety has not been confirmed;
 - Severe Diseases: Such as epilepsy, malignant tumors, severe heart disease, cardiovascular and cerebrovascular diseases;
 - Sensory Disorders: Insensitivity to heat or pain, or sensory impairment;
 - Postoperative and Implant Recipients: Recently undergone surgery or with internal metal implants (such as steel plates, bone nails);
 - Children and the Elderly: Must be used under adult supervision.
- Electrode Pad Usage and Maintenance**
- Replacement Cycle: The conductive gel of electrode pads will age. Replace them if you notice decreased viscosity, easy detachment, or increased skin irritation. Some products are marked for up to 50 uses (about 20 minutes per use);
 - Cleaning and Maintenance: After use, rinse the gel surface with clean water, air-dry naturally, and then stick it back to the protective film for storage. Ensure the storage environment is dry.

Instrument Introduction

Panel Function Description



- 01 Start/Pause Button
- 02-03 Start/Pause Indicator Lights
- 04 Frequency Selection Button
- 05-07 Frequency Selection Indicator Lights
- 08 Error Warning Indicator Light
- 09 Time Display (minutes)
- 10-11 Timer Adjustment Buttons (Increase/Decrease)
- 12 Program Selection Button (Switch between P1-P4)
- 13-16 Program Indicator Lights
- 17 Auto Program Selection Button
- 18 Auto Program Indicator Light
- 19-28 Power Intensity Adjustment Knobs (for each output channel)
- 29-38 Ten-channel Pulse Output Sockets
- 39 Power Input Socket
- 40 Fuse
- 41 Power Switch
- 42 110V/220V Voltage Conversion Switch